

# ==== Shimadzu LabSolutions Analysis Report =====

Sample Name	: DL V22 R4		
Sample ID	:		
Data Filename	: DL V22 R4_20241114_DL V22_SFB_B_ST1_0.8 mL_45 min_Start_003.lcd		
Method Filename	: SFB_B_ST1_0.8 mL_45 min_Start.lcm		
Batch Filename	: 20241115_DL V20-22 Postrun.lcb		
Vial #	: 1-3	Sample Type	: Unknown
Injection Volume	: 10 uL		
Date Acquired	: 11/14/2024 11:56:18 AM	Acquired by	: System Administrator
Date Processed	: 11/15/2024 9:42:09 AM	Processed by	: System Administrator

---

## <Method>

### <<Header>>

Generated	: 4/24/2024 3:47:23 PM
GeneratedBy	: System Administrator
Modified	: 11/14/2024 8:56:42 AM
ModifiedBy	: System Administrator

### <<System Controller>>

Model	: SCL-40
Event1	: Off
Event2	: Off
Sample Load Timing	: Off

### <<Data Acquisition>>

LC Stop Time	: 45.00 min
Detector A Name	: Detector A
Detector A Sampling Frequency	: 2 Hz
Detector A Start Time	: 0.00 min
Detector A End Time	: 45.00 min

### <<Pump>>

Mode	: Isocratic flow
Pump A	: LC-40D
Pump A Flow/Pressure	: Flow
Pump System A Flow	: 0.8000 mL/min
Pump System A Flow Slope	: 20.00 min
Pump A PressMax	: 90 bar
Pump A PressMin	: 0 bar
Pump A Valve Model	: Switching Valve
Pump A Valve	: B
Pump A Compressibility Setting	: On
Pump A Mobile Phase Settings	: 0.45 /GPa

### <<Autosampler>>

Autosampler Model	: SIL-40
Enable Autosampler	: Use
Rinse Type	: External only
Specify Plate	: Off
Rinsing Volume	: 500 uL
Cut Off Loop	: Off
Specify Needle Stroke	: Off
Rinsing Speed	: 35 uL/sec
Sampling Speed	: 5.0 uL/sec
Rinse Port R0 Purge Time	: 2.0 min
Measuring Line Purge Time	: 5.0 min
Rinse Mode	: Before and after aspiration
Rinse Dip Time	: 0 sec
Measuring Line Purge Volume	: 100 uL
Air Gap Volume	: Off
Rinse Port Liquid	: R0

### <<Sample Pretreatment>>

Mode	: Standard
------	------------

### <<Oven>>

Oven Model	: CTO-40C
Enable Oven	: Use
Oven Temperature	: 25 C
Maximum Temperature	: 105 C

Ready Check : On  
 Wait Time : 5 min  
 Ready Range : 1.0 C  
 Fan Speed : Auto  
 Cooler Mode : Auto  
 Valve 1/L : FCV-0206  
 Valve 1/L Position : 1: Column1

## &lt;&lt;Detector A&gt;&gt;

Model : RID-20A  
 Mode : Analytical  
 Polarity : +  
 Use Cell Temp. : Use  
 Cell Temp. : 40.0 C  
 Response : 1.5 sec  
 Intensity Unit : Volt  
 Auxiliary Range : 1.0E-3 RIU/V  
 Recorder Range : 100.00 uRIU/FS  
 Synchronize with Auxiliary : Off  
 Purge Time : 20 min

## &lt;&lt;LC Time Program&gt;&gt;

Time	Module	Command	Value	Comment
0.01	RID-20A(DET.A)	Zero		
45.00	Controller	Stop		

## &lt;&lt;Peak Integration&gt;&gt;

## &lt;Detector A&gt;

Channel : Ch1  
 Width : 5 sec  
 Slope : 2000 uV/min  
 Drift : 0 uV/min  
 T.DBL : 1000 min  
 Max Slices : 0  
 Peak Top Detection : Normal  
 RT Compensation Mode : Fine  
 Min.Area/Height is made effective in Manual Integration : Off  
 Min.Area/Height : 1000 counts  
 Calculated by : Area  
 Noise Calculation Settings : Noise Data : Current Data  
 Calculation Method : ASTM  
 Range : Whole Range  
 Interval : 0.5 min  
 Include the Peak Detected Range : Off  
 Detection Limit Coefficient : 3.3  
 Quantitative Limit Coefficient : 10.0  
 Drift Calculation Settings : 0.000 - 15.000 min

## &lt;&lt;Integration Time Program(Method)&gt;&gt;

## &lt;Detector A&gt;

Channel : Ch1  
 Time Program : None

## &lt;&lt;Integration Time Program(Data)&gt;&gt;

## &lt;Detector A&gt;

Channel	Time Program	No. Enable	Time(min)	Command	Value
		1 [Yes]	11.696	Move BL	12.141
		2 [Yes]	11.342	Move BL	11.789

## &lt;&lt;Identification&gt;&gt;

## &lt;Detector A&gt;

Window/Band : Window  
 Window : 5.00 %  
 Identification Method : Absolute  
 Peak Selection : Closest Peak  
 Display not identified peaks : Not display

## &lt;&lt;Quantitative&gt;&gt;

## &lt;Detector A&gt;

Quantitative Method : External Standard  
 Calculated by : Area  
 # of Calibration Levels : 14  
 Curve Fit Type : Linear  
 Zero : Not Forced  
 Weighting Method : None  
 X Axis of Calib. Curve : Conc.  
 Units : mol/L  
 Format of Conc. : Decimals

Format of Conc. Figure : 5  
 Group Type : Not Used  
 Check %Dev(Standard) : No  
 Check Accuracy[%](Standard) : No  
 Check %Dev(Control) : No  
 Check Accuracy[%](Control) : No  
 Check %Dev(Additive) : No  
 Check Accuracy[%](Additive) : No  
 Check %Dev(Unknown) : No  
 Check Accuracy[%](Unknown) : No  
 Check Quantitation Limit : No  
 Check Detect Limit : No

## &lt;&lt;Compound Table&gt;&gt;

## &lt;Detector A&gt;

ID# : 1  
 Name : Methanol  
 Type : Target  
 Channel : Ch1  
 Retention Time : 14.400 min  
 Retention Index : 0  
 Concentration : [1]=3.016738 [2]=1.049395 [3]=0.4943277  
                           [4]=0.2893701 [5]=0.1127578 [6]=0.06136267  
                           [7]=0.01619725 [8]=3.016738 [9]=1.049395  
                           [10]=0.4943277 [11]=0.2893701 [12]=0.1127578  
                           [13]=0.06136267 [14]=0.01619725  
 Peak Selection : Default(Closest Peak)  
 Calculated by : Default(Area)  
 Curve Fit Type : Default(Linear)  
 Zero : Default(Not Forced)  
 Weight : Default(None)  
 Window/Band : Default(Window)  
 Spiked : 0.000  
 1st Coefficient : 4.720087e+005  
 Intersection : 1.693726e+003  
 Correction Factor : 1.000000  
 Standard concentration factor : 1.000000

ID# : 2  
 Name : Glycerin  
 Type : Target  
 Channel : Ch1  
 Retention Time : 10.000 min  
 Retention Index : 0  
 Concentration : [1]=2.958375 [2]=1.078646 [3]=0.5353454  
                           [4]=0.3066948 [5]=0.114594 [6]=0.05901699  
                           [7]=0.0117174 [8]=2.958375 [9]=1.078646  
                           [10]=0.5353454 [11]=0.3066948 [12]=0.114594  
                           [13]=0.05901699 [14]=0.0117174  
 Peak Selection : Default(Closest Peak)  
 Calculated by : Default(Area)  
 Curve Fit Type : Default(Linear)  
 Zero : Default(Not Forced)  
 Weight : Default(None)  
 Window/Band : Default(Window)  
 Spiked : 0.000  
 1st Coefficient : 7.326784e+006  
 Intersection : 2.573900e+005  
 Correction Factor : 1.000000  
 Standard concentration factor : 1.000000

ID# : 3  
 Name : n-Propanol  
 Type : Target  
 Channel : Ch1  
 Retention Time : 20.000 min  
 Retention Index : 0  
 Concentration : [1]=3.02526 [2]=1.092217 [3]=0.5139845  
                           [4]=0.3105323 [5]=0.09785473 [6]=0.04497364  
                           [7]=0.01087275 [8]=3.02526 [9]=1.092217  
                           [10]=0.5139845 [11]=0.3105323 [12]=0.09785473  
                           [13]=0.04497364 [14]=0.01087275  
 Peak Selection : Default(Closest Peak)  
 Calculated by : Default(Area)  
 Curve Fit Type : Default(Linear)  
 Zero : Default(Not Forced)  
 Weight : Default(None)  
 Window/Band : Default(Window)  
 Spiked : 0.000

1st Coefficient : 3.955755e+006  
 Intersection : -2.585461e+004  
 Correction Factor : 1.000000  
 Standard concentration factor : 1.000000  
  
 ID# : 4  
 Name : 1,2 Propandiol  
 Type : Target  
 Channel : Ch1  
 Retention Time : 12.400 min  
 Retention Index : 0  
 Concentration : [1]=2.977546 [2]=1.016412 [3]=0.5030017  
                   [4]=0.3027638 [5]=0.1023958 [6]=0.04970167  
                   [7]=0.01157971 [8]=2.977546 [9]=1.016412  
                   [10]=0.5030017 [11]=0.3027638 [12]=0.1023958  
                   [13]=0.04970167 [14]=0.01157971

Peak Selection : Default(Closest Peak)  
 Calculated by : Default(Area)  
 Curve Fit Type : Default(Linear)  
 Zero : Default(Not Forced)  
 Weight : Default(None)  
 Window/Band : Default(Window)  
 Spiked : 0.000  
 1st Coefficient : 5.771075e+006  
 Intersection : 6.007717e+004  
 Correction Factor : 1.000000  
 Standard concentration factor : 1.000000

ID# : 5  
 Name : 1,3 Propandiol  
 Type : Target  
 Channel : Ch1  
 Retention Time : 13.000 min  
 Retention Index : 0  
 Concentration : [1]=2.976375 [2]=0.9968958 [3]=0.4990984  
                   [4]=0.2900131 [5]=0.10734 [6]=0.04944145  
                   [7]=0.0100184 [8]=2.976375 [9]=0.9968958  
                   [10]=0.4990984 [11]=0.2900131 [12]=0.10734  
                   [13]=0.04944145 [14]=0.0100184

Peak Selection : Default(Closest Peak)  
 Calculated by : Default(Area)  
 Curve Fit Type : Default(Linear)  
 Zero : Default(Not Forced)  
 Weight : Default(None)  
 Window/Band : Default(Window)  
 Spiked : 0.000  
 1st Coefficient : 5.532080e+006  
 Intersection : 6.014722e+004  
 Correction Factor : 1.000000  
 Standard concentration factor : 1.000000

ID# : 6  
 Name : iso-Propanol  
 Type : Target  
 Channel : Ch1  
 Retention Time : 16.825 min  
 Retention Index : 0  
 Concentration : [1]=3.03666 [2]=1.003405 [3]=0.5418687  
                   [4]=0.3101858 [5]=0.1067771 [6]=0.04972951  
                   [7]=0.01397083 [8]=3.03666 [9]=1.003405  
                   [10]=0.5418687 [11]=0.3101858 [12]=0.1067771  
                   [13]=0.04972951 [14]=0.01397083

Peak Selection : Default(Closest Peak)  
 Calculated by : Default(Area)  
 Curve Fit Type : Default(Linear)  
 Zero : Default(Not Forced)  
 Weight : Default(None)  
 Window/Band : Default(Window)  
 Spiked : 0.000  
 1st Coefficient : 3.797216e+006  
 Intersection : -2.284739e+004  
 Correction Factor : 1.000000  
 Standard concentration factor : 1.000000

ID# : 7  
 Name : Hydroxyacetone  
 Type : Target  
 Channel : Ch1  
 Retention Time : 13.300 min



Weight : Default(None)  
 Window/Band : Default(Window)  
 Spiked : 0.000  
 1st Coefficient : 4.601450e+006  
 Intersection : -1.609005e+003  
 Correction Factor : 1.000000  
 Standard concentration factor : 1.000000

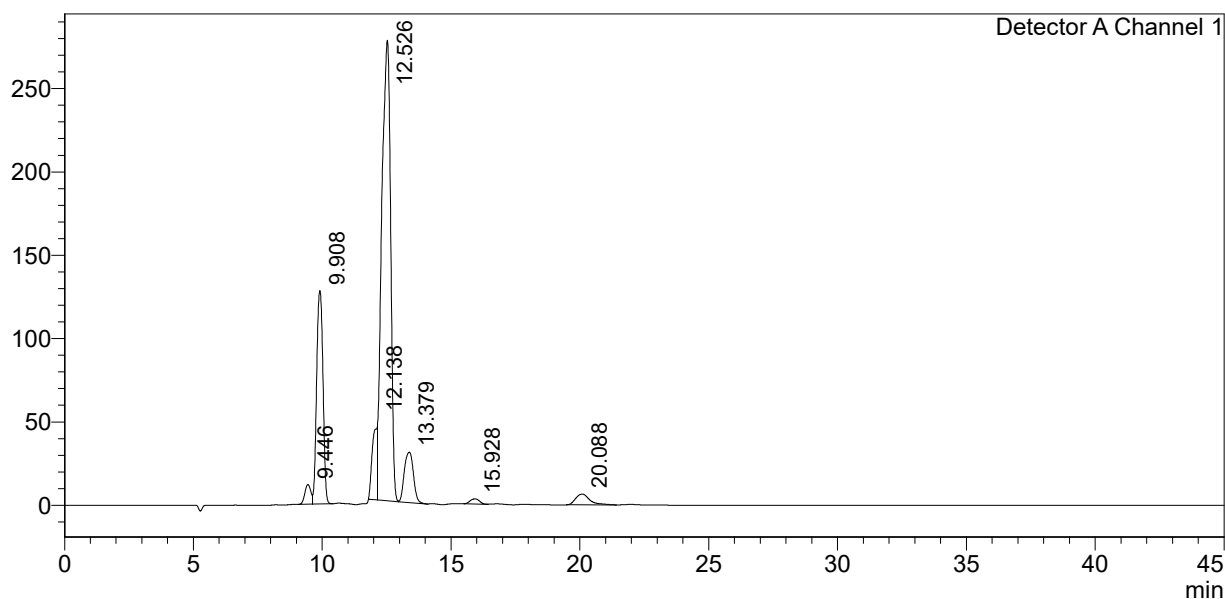
## &lt;&lt;Column Performance&gt;&gt;

## &lt;Detector A&gt;

Calculation Method : USP  
 Unretained Peak Time : Time at 1st Peak  
 Column Length : 150 mm  
 Calculate Identified Peaks Only : Off  
 Calculation of Relative Retention Time : Off

## &lt;Chromatogram&gt;

mV



## &lt;Peak Table&gt;

Detector A Channel 1

Peak#	Ret. Time	Area	Height	Conc.	Unit	Mark	Name
1	9.446	190198	11777	0.000			
2	9.908	2203140	128183	0.266	mol/L	V	Glycerin
3	12.138	602672	43533	0.140	mol/L	M	Ethylenglykol
4	12.526	6616770	276304	1.136	mol/L	V M	1,2 Propandiol
5	13.379	739776	30217	0.140	mol/L	V	Hydroxyacetone
6	15.928	75577	3034	0.040	mol/L		Ethanol
7	20.088	246892	6477	0.069	mol/L		n-Propanol
Total		10675024	499525				